

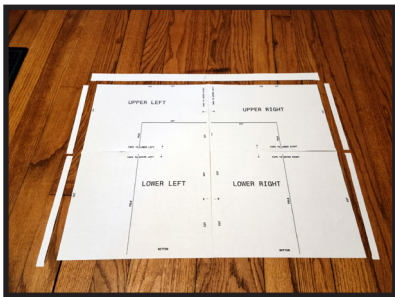
HOW TO ASSEMBLE A COVID-19 AIR FILTRATION BOX FAN USING THE DOWNLOADABLE TEMPLATE



STEP 1: Print the four PDF files at full scale. Then tape the four pages together as indicated on the templates



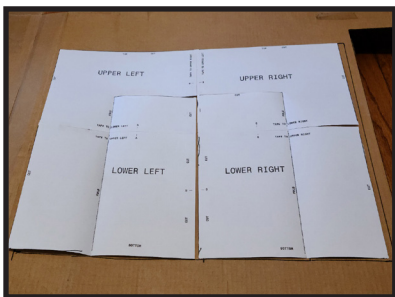
STEP 6: Stand the sides up and tape the corners together



STEP 2: Trim the excess from the top and sides of the template



STEP 7: Fold the leg flaps over each other and tape them together. The frame is now complete



STEP 3: Use the template to mark up one side of the frame on cardboard



STEP 8: Place your 4x20x20 MERV 13 filter in the frame face down



STEP 4: Cut out cardboard frame side and fold along indicated lines

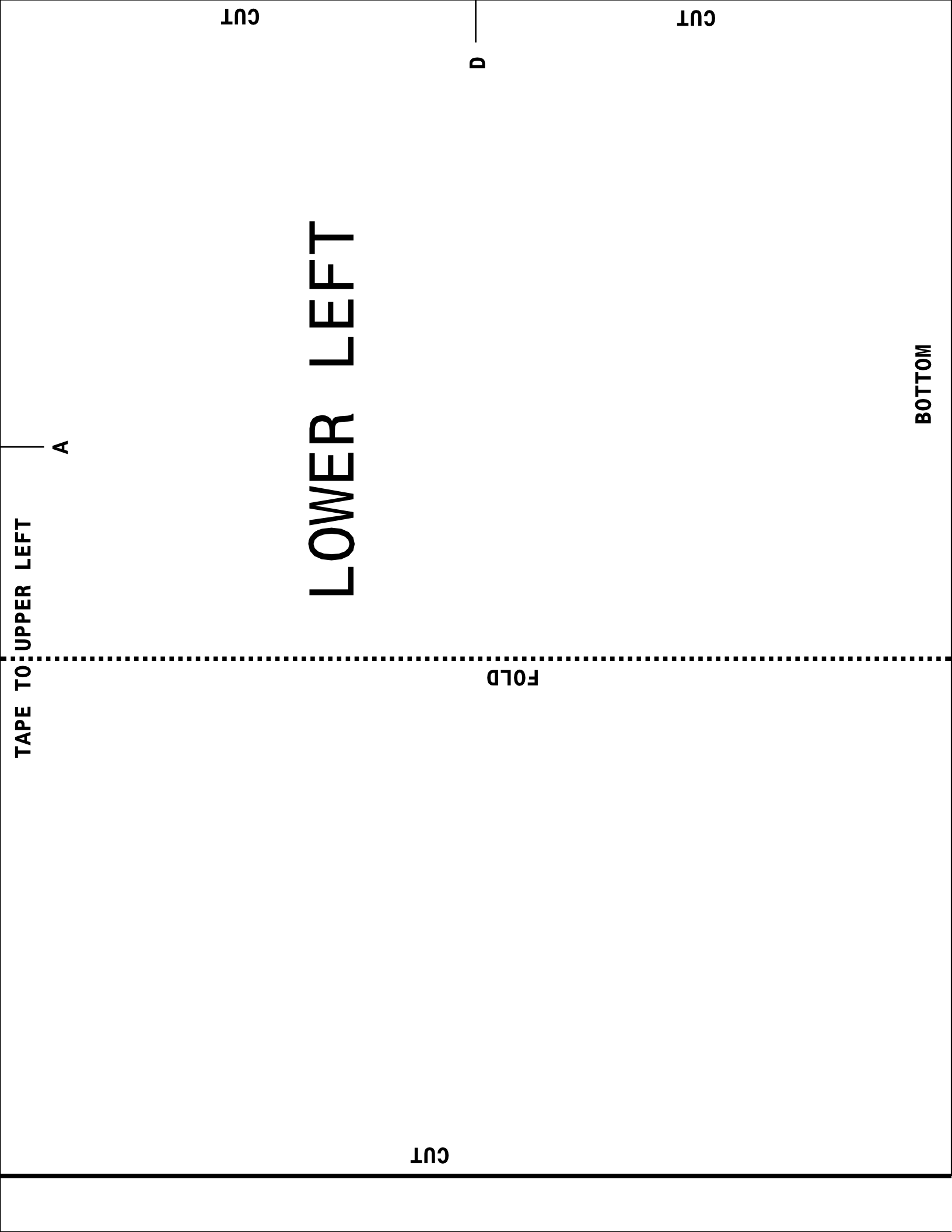


STEP 9: Place your 20-inch box fan on top of the filter face down so that it blows down through the filter



STEP 5: Cut out three more copies of the cardboard sides to make four total

STEP 10: Place the completed fan as close to the center of the room as practical and run the fan on high for maximum filtration



TAPE TO UPPER LEFT

A

LOWER LEFT

FOLD

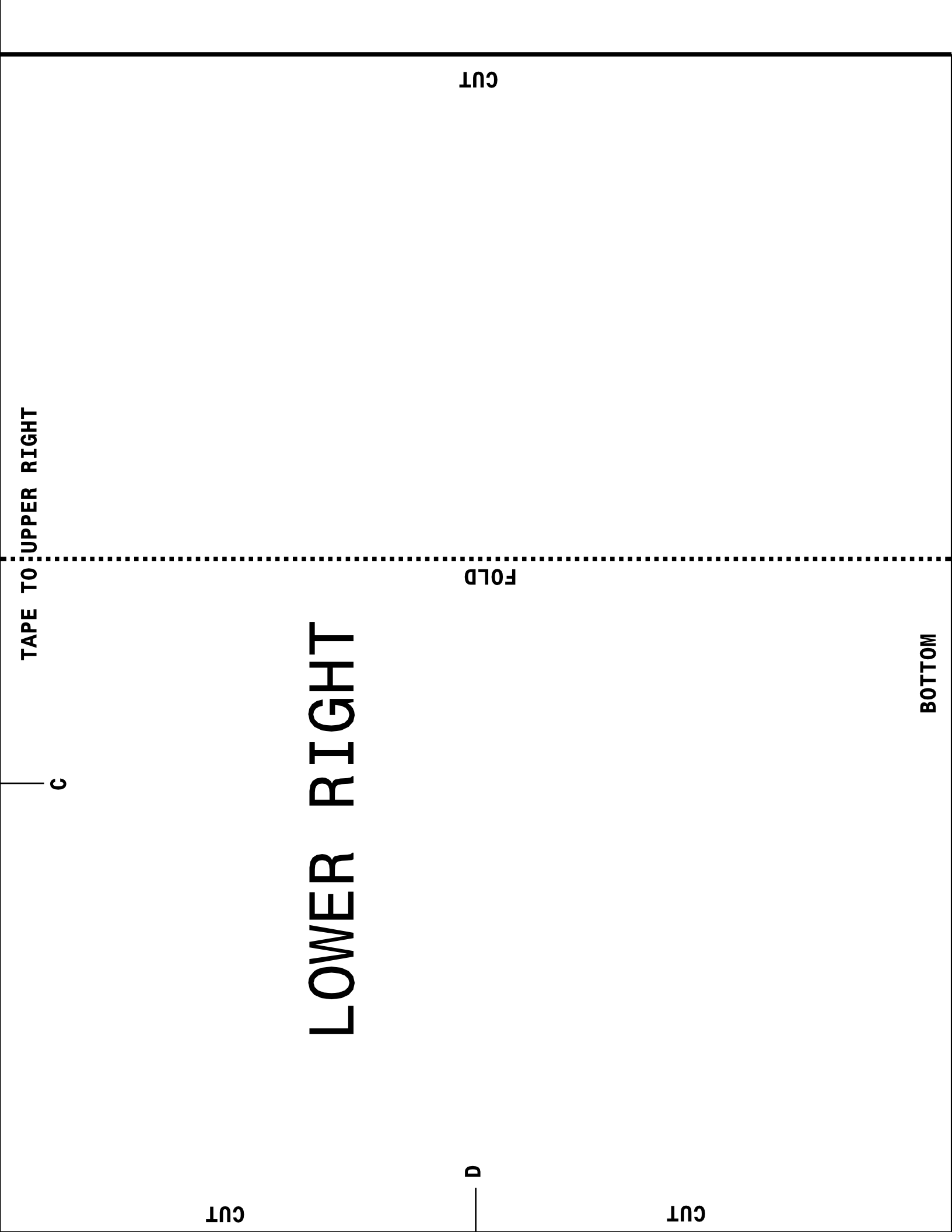
CUT

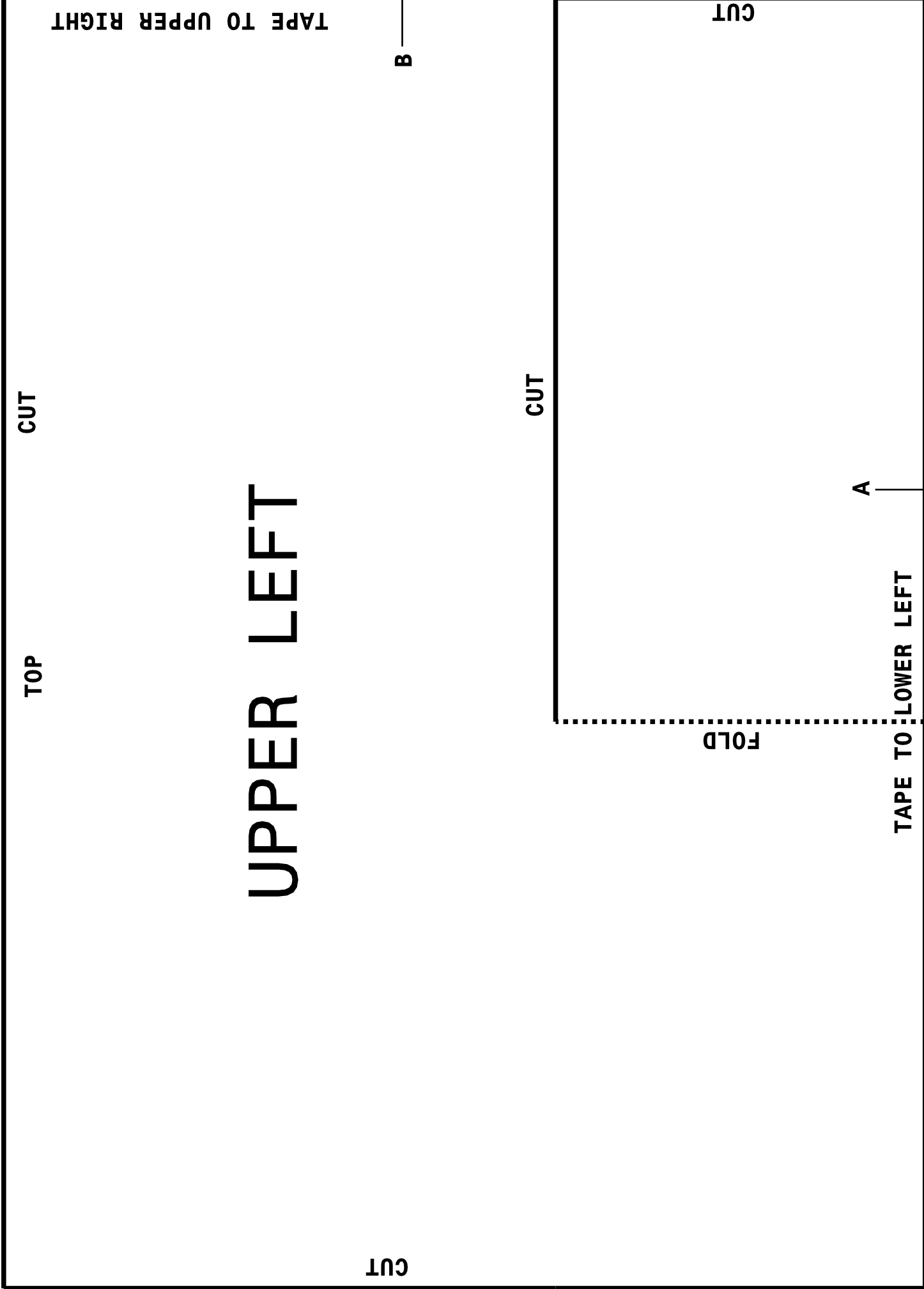
D

CUT

CUT

BOTTOM





CUT

TOP

UPPER LEFT

CUT

B

TAPE TO UPPER RIGHT

CUT

FOLD

A

TAPE TO LOWER LEFT

CUT

TAPE TO UPPER LEFT

B

TOP

CUT

UPPER RIGHT

CUT

CUT

FOLD

C

TAPE TO LOWER RIGHT

CUT